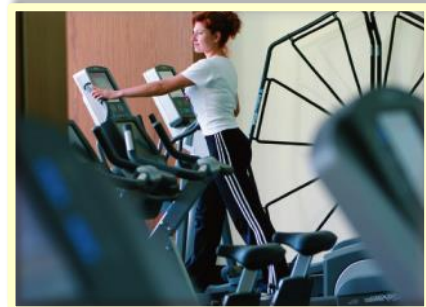


NSD2500 Smart Display

The ideal platforms for multimedia, digital signage and HMI applications

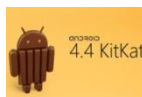
New Features
High Brightness LCD
Long LED lifetime
Industrial Operating Temp



- High Brightness TFT LCD
- 50K hours backlight lifetime
- -20°C~+70°C Operating Temp
- Capacitive Touch Screen
- 9V ~ 36V Wide Power Input
- Over voltage protection (option)
- Quad Band 3G Module (option)
- ARM Cortex-A9 Processor
- Android, Linux, Yocto

[Typical Applications]

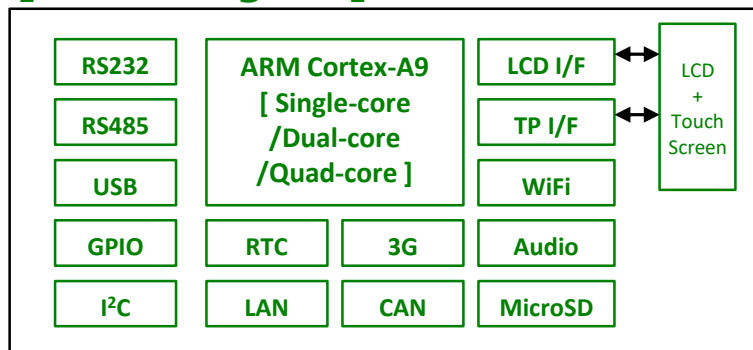
- ❑ Data logger
- ❑ Vehicle Infotainment
- ❑ Industrial Equipment
- ❑ Smart Home Console
- ❑ Digital Signage
- ❑ POS, KIOSK



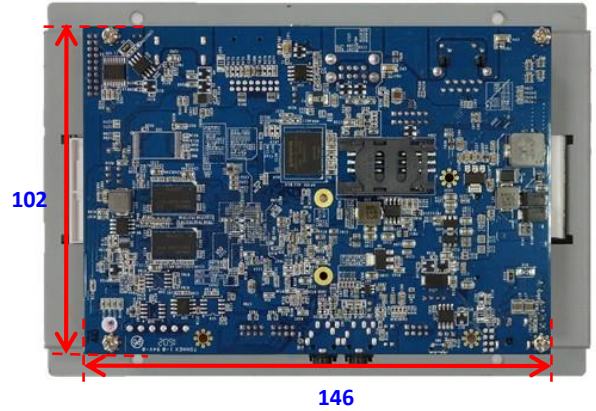
[Product Specifications]

	NSD2510WX	NSD2507WS
Screen Size	10.1-inch	7-inch
Resolution / Colors	1280x800 WXGA / 16.7M	1024x600 WSVGA / 16.7M
Contrast / Luminance	800 / 500 cd/m ²	560 / 800 cd/m ²
Backlight / Lifetime	LED / 50K hours	LED / 50K hours
View Angle	80/80/80/80 (L/R/T/B) degree	75/75/70/75 (L/R/T/B) degree
Touch Screen	Projected Capacitive	
Processor / RAM / Flash	Single-Core (iMX6S) 1GHz / 1GB DDR3 / 4GB Dual-Core (iMX6D) 1GHz / 1GB DDR3 / 4GB Quad-Core (iMX6Q) 1GHz / 2GB DDR3 / 4GB	
Power Input	DC +9V ~ +36V	
OS	Android 4.2 / 4.4, Yocto	
Audio / Video	2x speaker connector + 1x MIC In + 1x headphone + 1x Line-in	
Network	1x 10M/100M/1G bps Ethernet	
RTC	Yes (with rechargeable battery)	
USB / SD Card	1x USB2.0 OTG port + 2x USB2.0 Host + 1x microSD card slot	
UART / I ² C / GPIO	1x RS232 + 1x RS485 + 1x I ² C master + 8-bit GPIO	
Weight / Dimension	1083.2 g / 183x268x38 mm	547.6 g / 125.5x182x28 mm
Environment	Operating Temperature: -20°C to +70°C	
Optional Functions (-V option)	1x CAN bus + additional 8-bit GPIO + over voltage/current protection	
Optional Modules	3G module, 4xRS232/RS485 module	

[Block Diagram]



[NSD2507 Dimension]



(unit: mm)



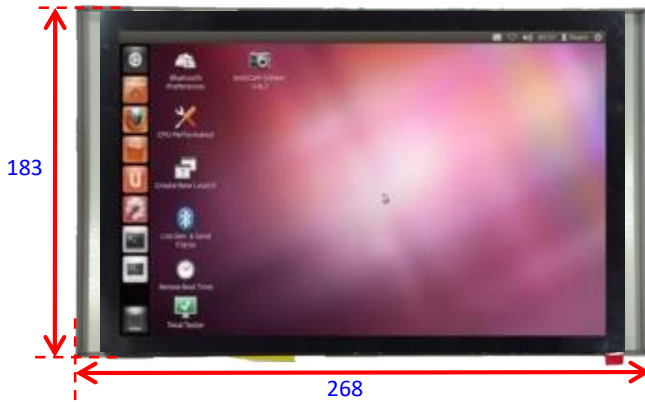
[NSD2507 Ordering Information]

Part No.	OS	CPU	RAM	CAN Bus	GPIO	Voltage Protection	Common Specifications
NSD2507WS-SYC	Yocto	iMX6S Single-Core	1GB DDR3	NO	8-bit	NO	See specification table in previous page
NSD2507WS-SAC	Android						
NSD2507WS-SYC-V	Yocto			YES	16-bit	YES	
NSD2507WS-SAC-V	Android						

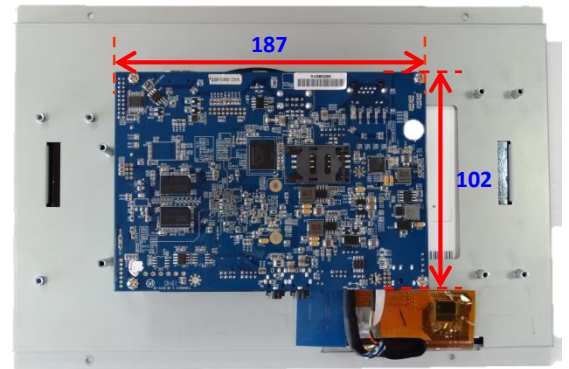
[Optional Modules]

Part No.	Description
WLS-006	(RTL8723 WiFi + BT) + Antenna (8cm/2dBi, SMA plug reverse)
D120	4xCOM port module (4 x RS232/RS422 module)
WCDMA-002	Quad-Band 3G (WCDMA) module + Antenna

[NSD2510 Dimension]



(unit: mm)



[NSD2110 Ordering Information]

Part No.	OS	CPU	RAM	CAN Bus	GPIO	Voltage Protection	Common Specifications
NSD2510WX-SYC	Yocto	iMX6S Single-Core	1GB DDR3	NO	8-bit	NO	See specification table in previous page
NSD2510WX-SAC	Android						
NSD2510WX-SYC-V	Yocto			YES	16-bit	YES	
NSD2510WX-SAC-V	Android						

[Optional Modules]

Part No.	Description
WLS-006	(RTL8723 WiFi + BT) + Antenna (8cm/2dBi, SMA plug reverse)
D100	4-ch Video capture (NTSC/PAL) module
D120	4xCOM port module (4x RS232/RS422 module)
WCDMA-002	Quad-Band 3G (WCDMA) module + Antenna